



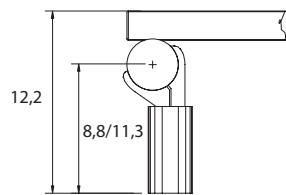
[Bath]
Trim Bath

informazioni tecniche
technical details
données techniques
technische Daten
informaciones técnicas
Page 130

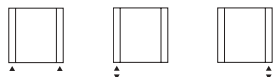




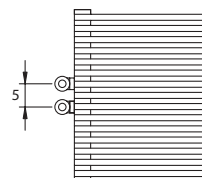
TRIM BATH



[A] attacco standard
standard connection
raccord standard
standard Anschluss
conexión estándar

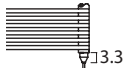

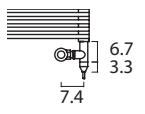
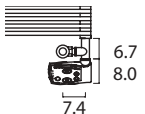


[B] attacco speciale
special connection
raccord spéciale
speziell Anschluss
conexión especial



P* 150

BD 13s						BIANCO		
A* cm	in	B* cm	in	I* cm	in	art*	BTU Δt 50°	watt Δt 50°
80.0	31.5	40.0	15.7	36.0	14.2	HB15000S080040	1 520	446
80.0	31.5	50.0	19.7	46.0	18.1	HB15000S080050	1 896	556
80.0	31.5	60.0	23.6	56.0	22.0	HB15000S080060	2 267	665
116.0	45.7	40.0	15.7	36.0	14.2	HB15000S116040	2 120	622
116.0	45.7	50.0	19.7	46.0	18.1	HB15000S116050	2 639	774
116.0	45.7	60.0	23.6	56.0	22.0	HB15000S116060	3 156	925
152.0	59.8	40.0	15.7	36.0	14.2	HB15000S152040	2 703	793
152.0	59.8	50.0	19.7	46.0	18.1	HB15000S152050	3 364	986
152.0	59.8	60.0	23.6	56.0	22.0	HB15000S152060	4 023	1 180
188.0	74.0	40.0	15.7	36.0	14.2	HB15000S188040	3 348	982
188.0	74.0	50.0	19.7	46.0	18.1	HB15000S188050	4 079	1 196
188.0	74.0	60.0	23.6	56.0	22.0	HB15000S188060	4 879	1 431

art	watt		art	watt	
SOVRES0350	350	E* 	SOVRES0350 T	350	ET* 
SOVRES0500	500		SOVRES0500 T	500	
SOVRES0700	700		SOVRES0700 T	700	
SOVRES1000	1000		SOVRES1000 T	1000	
KITRES0350	350	M* 	KITRES0350 T	350	MT* 
KITRES0500	500		KITRES0500 T	500	
KITRES0700	700		KITRES0700 T	700	
KITRES1000	1000		KITRES1000 T	1000	

A* = altezza / height / hauteur / Höhe / alto **B*** = larghezza / width / longueur / Breite / ancho **art*** = articolo / model / modèle / Artikel / artículo
I* = interasse / pipe centres / distance entre depart et retour / Achsabstand / distancia entre las conexiones **P*** = pagina / page / page / Seite / página
E* = elettrico / electrical / électric / elektrische / eléctrico **M*** = misto / dual application / mixte / der gemischter Ausführung / kit mixto
ET* = elettrico termostato ambiente / thermostat / thermostat / der Thermostat / termostato
MT* = misto termostato ambiente / dual application with thermostat / mixte avec thermostat / der gemischter Ausführung mit Thermostat / kit mixto con termostato



Ulteriori dettagli
Further details
Ulérieures détails
Weitere Einzelheiten
Otros detalles

P* 148

Colori/ colours / couleurs / Farbe / colores

- [BIAN] B standard
T + 10%
S + 20%
 - [RAL] S + 20%
- RAL non inclusi in tabella
special Ral colours
couleurs Ral spéciales
RAL Farbe nicht in der Tabelle inbegriffen
colores RAL especiales

Kcal = Watt x 0,860
BTU = Watt x 3,413

Watt Δt 60° = Watt Δt 50° x 1,255
Watt Δt 40° = Watt Δt 50° x 0,758
Watt Δt 30° = Watt Δt 50° x 0,530
Watt Δt 20° = Watt Δt 50° x 0,320