

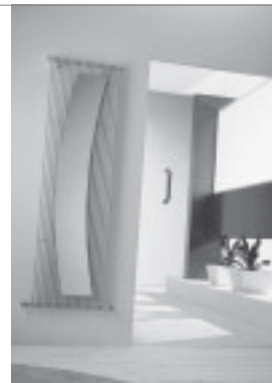


[Home]
Vision

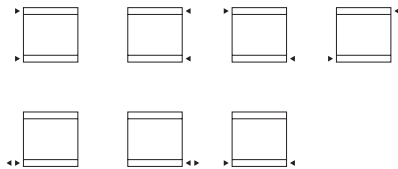
informazioni tecniche
technical details
données techniques
technische Daten
informaciones técnicas
Page 83

Vision

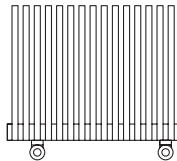
VISION



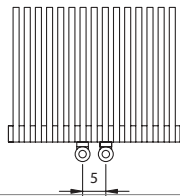
[X] attacco standard
standard connection
raccord standard
standard Anschluss
conexión estándar



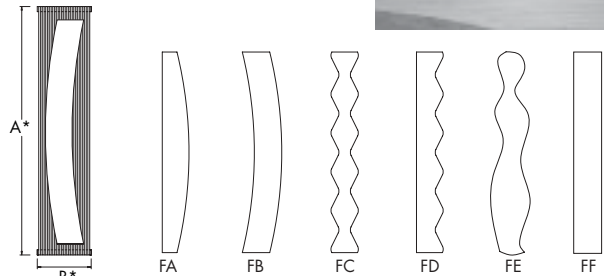
[B] attacco speciale
special connection
raccord spéciale
speziell Anschluss
conexión especial



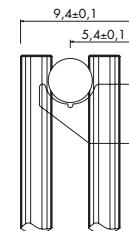
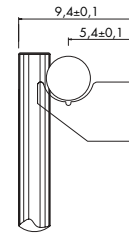
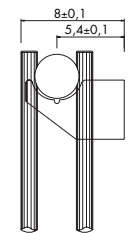
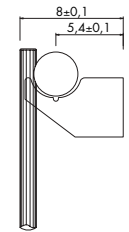
[B5] attacco interasse 5 cm
pipe centres 5 cm
raccords 5 cm
5 cm Achsabstand Anschluss
conexión entre ejes: 5 cm.



P* 150



H* cm	in	L* cm	in	I* cm	in	I* cm	in	art*	BTU Δt 50°	watt Δt 50°
Vision 13 S										
170.0	66.9	44.0	17.3	53.0	20.9	166.0	65.4	VS13000S170018	3 055	896
170.0	66.9	51.2	20.2	60.2	23.7	166.0	65.4	VS13000S170021	3 567	1 046
170.0	66.9	58.4	23.0	67.4	26.5	166.0	65.4	VS13000S170024	4 075	1 195
170.0	66.9	65.6	25.8	74.6	29.4	166.0	65.4	VS13000S170027	4 586	1 345
200.0	78.7	44.0	17.3	53.0	20.9	196.0	77.2	VS13000S200018	3 546	1 040
200.0	78.7	51.2	20.2	60.2	23.7	196.0	77.2	VS13000S200021	4 140	1 214
200.0	78.7	58.4	23.0	67.4	26.5	196.0	77.2	VS13000S200024	4 730	1 387
200.0	78.7	65.6	25.8	74.6	29.4	196.0	77.2	VS13000S200027	5 323	1 561
Vision 13 D										
170.0	66.9	44.0	17.3	53.0	20.9	166.0	65.4	VS13000D170018	4 586	1 345
170.0	66.9	51.2	20.2	60.2	23.7	166.0	65.4	VS13000D170021	5 350	1 569
170.0	66.9	58.4	23.0	67.4	26.5	166.0	65.4	VS13000D170024	6 114	1 793
170.0	66.9	65.6	25.8	74.6	29.4	166.0	65.4	VS13000D170027	6 878	2 017
200.0	78.7	44.0	17.3	53.0	20.9	196.0	77.2	VS13000D200018	5 309	1 557
200.0	78.7	51.2	20.2	60.2	23.7	196.0	77.2	VS13000D200021	6 193	1 816
200.0	78.7	58.4	23.0	67.4	26.5	196.0	77.2	VS13000D200024	7 079	2 076
200.0	78.7	65.6	25.8	74.6	29.4	196.0	77.2	VS13000D200027	7 962	2 335
Vision 25 S										
170.0	66.9	44.0	17.3	53.0	20.9	166.0	65.4	VS25000S170012	3 110	912
170.0	66.9	51.2	20.2	60.2	23.7	166.0	65.4	VS25000S170014	3 628	1 064
170.0	66.9	58.4	23.0	67.4	26.5	166.0	65.4	VS25000S170016	4 147	1 216
170.0	66.9	65.6	25.8	74.6	29.4	166.0	65.4	VS25000S170018	4 665	1 368
200.0	78.7	44.0	17.3	53.0	20.9	196.0	77.2	VS25000S200012	3 615	1 060
200.0	78.7	51.2	20.2	60.2	23.7	196.0	77.2	VS25000S200014	4 215	1 236
200.0	78.7	58.4	23.0	67.4	26.5	196.0	77.2	VS25000S200016	4 818	1 413
200.0	78.7	65.6	25.8	74.6	29.4	196.0	77.2	VS25000S200018	5 418	1 589
Vision 25 D										
170.0	66.9	44.0	17.3	53.0	20.9	166.0	65.4	VS25000D170012	4 794	1 406
170.0	66.9	51.2	20.2	60.2	23.7	166.0	65.4	VS25000D170014	5 596	1 641
170.0	66.9	58.4	23.0	67.4	26.5	166.0	65.4	VS25000D170016	6 394	1 875
170.0	66.9	65.6	25.8	74.6	29.4	166.0	65.4	VS25000D170018	7 195	2 110
200.0	78.7	44.0	17.3	53.0	20.9	196.0	77.2	VS25000D200012	5 497	1 612
200.0	78.7	51.2	20.2	60.2	23.7	196.0	77.2	VS25000D200014	6 411	1 880
200.0	78.7	58.4	23.0	67.4	26.5	196.0	77.2	VS25000D200016	7 328	2 149
200.0	78.7	65.6	25.8	74.6	29.4	196.0	77.2	VS25000D200018	8 242	2 417



A* = altezza / height / hauteur / Höhe / alto B* = larghezza / width / longueur / Breite / ancho art* = articolo / model / modèle / Artikel / artículo P* = pagina / page / page / Seite / página
I* = interasse / pipe centres / distance entre départ et retour / Achsabstand / distancia entre las conexiones

Kcal = Watt x 0,860
BTU = Watt x 3,413

Watt Δt 60° = Watt Δt 50° x 1,259
Watt Δt 40° = Watt Δt 50° x 0,754
Watt Δt 30° = Watt Δt 50° x 0,525
Watt Δt 20° = Watt Δt 50° x 0,314

Colori/ colours / couleurs / Farbe / colores

[BIAN] B standard
T + 10%
S + 20%
[RAL] S + 20%
RAL non inclusi in tabella
special Ral colours
couleurs Ral spéciales
RAL Farbe nicht in der Tabelle inbegriffen
colores RAL especiales

Ulteriori dettagli
Further details
Ulérieures détails
Weitere Einzelheiten
Otros detalles



P* 148